

#### Colour Legend

- Retroreflective yellow
- Black

#### Notes

1. This sign is to be used where there are more than one through lane at an intersection and the possibility exists of trucks turning from the outside lane across the inside lane into a side street.



**Queensland  
Government**

## TRAFFIC WARNING SIGN “DO NOT OVERTAKE TURNING TRUCKS”

Infrastructure Management & Delivery Division

APPROVED AS OFFICIAL TRAFFIC SIGN

Designed  
TV 02/13

Checked  
DJ 02/13

Scale  
Not to Scale

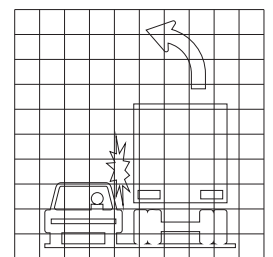
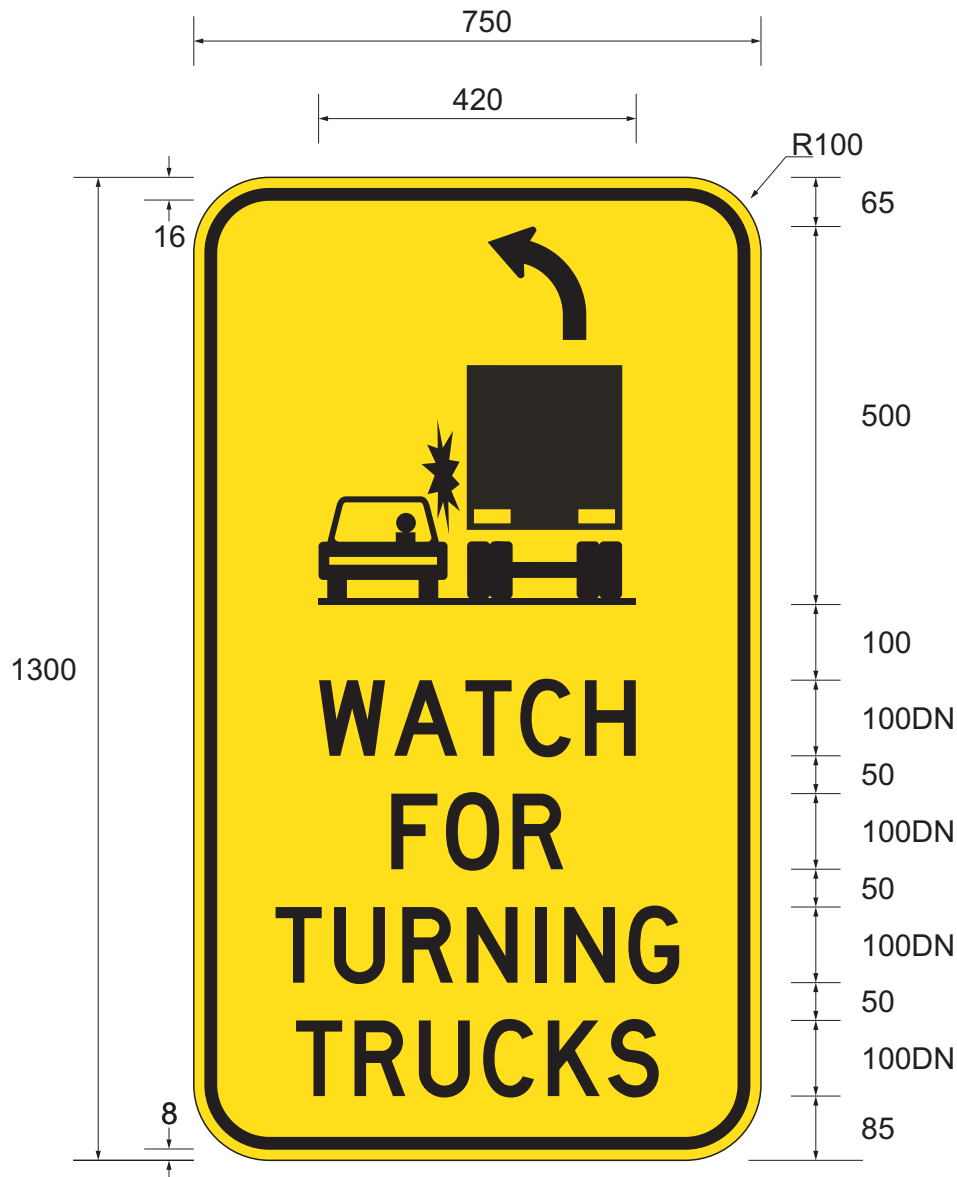
*R. King*  
ACTING PRINCIPAL ENGINEER  
(Traffic Engineering)

15/02/13  
Date

**TC1988\_1**

Page 1 of 3

A



#### Colour Legend

- Retroreflective yellow
- Black

#### Notes

1. This sign is to be used where a left hand turning lane and a through lane exist and the possibility exists of permitted trucks turning from the outside through lane across the inside lane into a side street.



**Queensland  
Government**

### TRAFFIC WARNING SIGN "WATCH FOR TURNING TRUCKS" (ACROSS LEFT HAND TURN LANE)

Infrastructure Management & Delivery Division

APPROVED AS OFFICIAL TRAFFIC SIGN

Designed  
TV 02/13

Checked  
DJ 02/13

Scale  
Not to Scale

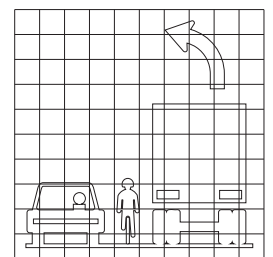
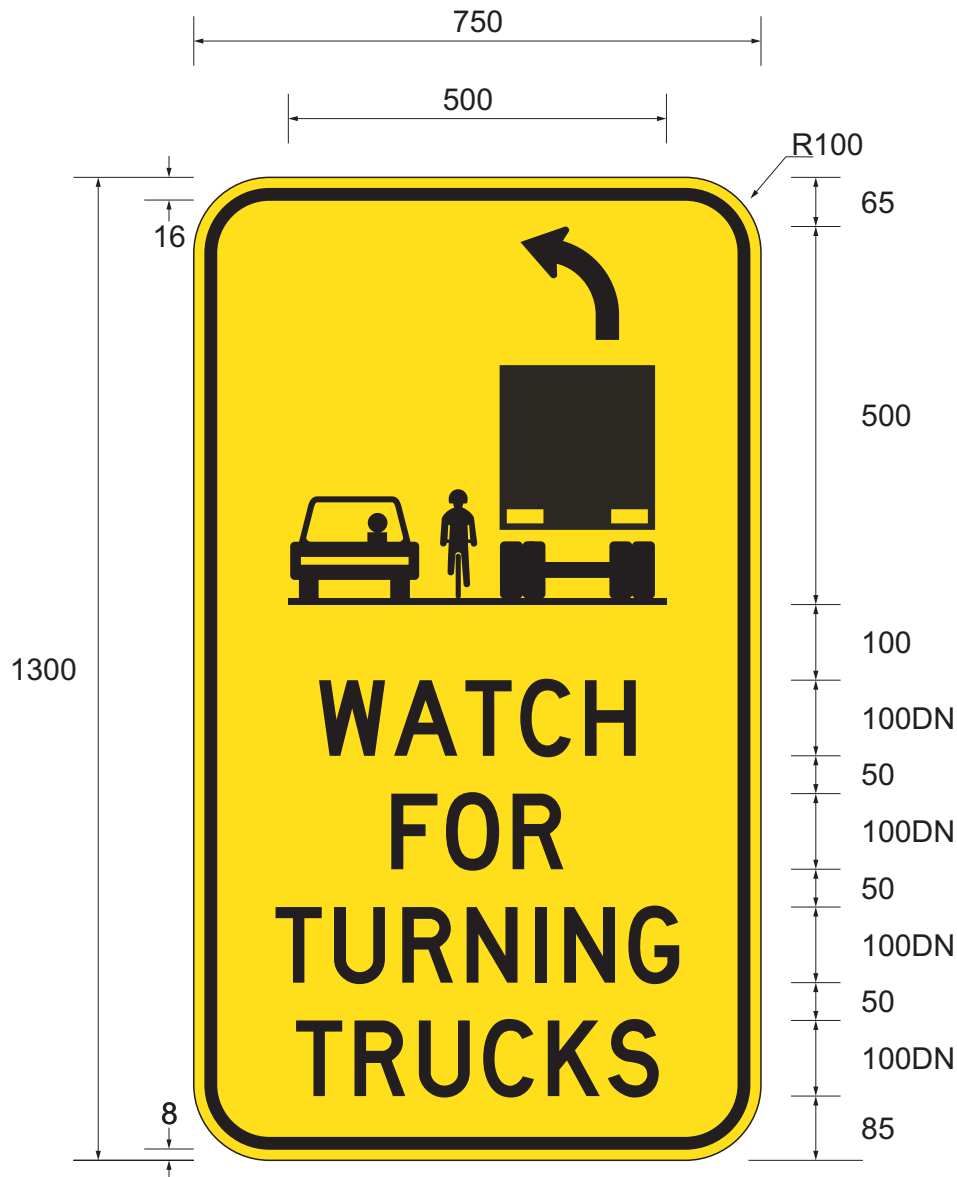
*R. King*  
ACTING PRINCIPAL ENGINEER  
(Traffic Engineering)

15/02/13  
Date

**TC1988\_2**

Page 2 of 3

A ☐ ☐ ☐ ☐ ☐



#### Colour Legend

- Retroreflective yellow
- Black

#### Notes

1. This sign is to be used where both a left hand turning lane and a bike lane exist at an intersection and the possibility exists of trucks turning from the outside lane across the inside lane into a side street.



**Queensland  
Government**

## TRAFFIC WARNING SIGN

**“WATCH FOR TURNING TRUCKS”  
(ACROSS LEFT HAND TURN AND BIKE LANES)**

Infrastructure Management & Delivery Division

APPROVED AS OFFICIAL TRAFFIC SIGN

Designed  
TV 02/13

Checked  
DJ 02/13

Scale  
Not to Scale

*R. King*  
ACTING PRINCIPAL ENGINEER  
(Traffic Engineering)

15/02/13  
Date

**TC1988\_3**

Page 3 of 3

A